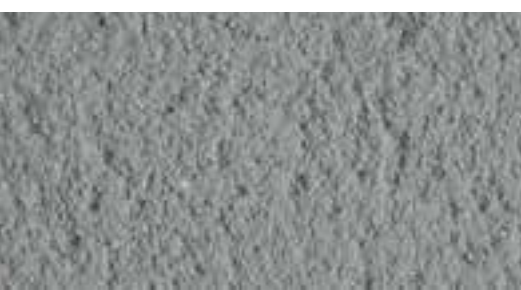


FASSACOUCHE

One-layer semi-lightweight coloured plaster for
waterproofing and decorating façades





01

THE FASSA TRADITION

A FAMILY STORY

AN INTERNATIONAL AMBITION

It takes time for a company to build a good reputation. It also requires top quality products capable of enhancing the competence and passion of the people that use them. In our case, history is on our side. Fassa Bortolo has been a recognised name in the building industry for over 300 years. Today we have twelve production plants in Italy and 1 in Portugal, as well as 3 commercial branches in Italy, 3 in Switzerland, 1 in France, 1 in Spain and 1 in the UK. Throughout its long history, Fassa Bortolo has always known how to renew itself from generation to generation, and has developed and evolved in step with the market to achieve the highest standards of quality.

Today, Fassa is a point of reference for everybody in the construction industry, from architects to retailers and builders. Fassa offers a complete range of products covering masonry mortars, ready-to-use plasters, paints, coloured coatings, screeds, wall and floor covering products, sanitising solutions, concrete repair products and thermal insulation. Fassa also boasts a range of natural, ecological products for building and refurbishing, certified to the latest criteria of ecological architecture. Every Fassa product is the result of continuous investment in research and development, as well as detailed analysis and rigorous testing in the laboratories of our Research Centre and in practical applications, to guarantee the best possible solution to the needs of everybody working in the construction industry.



02 FASSACOCUCHE

ONE-LAYER PLASTER



Monocouche plaster is intended primarily to protect substrates against physical and climatic attack and to keep buildings waterproof. Though Monocouche plaster was originally formulated to waterproof and decorate masonry walls, today it offers excellent decorative flexibility as well as quick and easy application. The Fassa range has now been extended by the addition of a new product, **Fassacouche**, an OC2 class one-layer wall plaster.

Fassacouche is the result of Fassa Bortolo's unrivalled know-how, acquired as a result of the company's vast experience in pre-mixed plasters and coloured finishings, products for which Fassa is rightly famous on the international construction market.

Thanks to a special formulation, developed at our own Research Centre, this one-layer plaster boasts unique and top quality characteristics:

- Excellent yield: 1.3 kg/m² per mm of thickness.
 - The use of inorganic pigments gives improved light fastness and results in more uniform colours that do not fade over time. Unfavourable drying conditions, such as combinations of sun and shade on the surface, may nevertheless lead to variations in tone due to the formation of more or less pronounced whitish marks in the plaster.
- Compared to alternative products offering similar characteristics, **Fassacouche** does not need
- accelerators or retarders to be added in order to modify hardening times to suit ambient conditions before finishing. **Fassacouche** can be finished without the use of additives on site after around 3 to 3.5 hours.
- Fassacouche is highly permeable to water vapour, as is shown by its water vapour diffusion resistance factor of $\mu \leq 8$ (measured, not tabulated value). It nevertheless guarantees excellent performance in terms of liquid water absorption (W2 according to standard EN 1015-18).

Raw materials

Fassacouche is a one-layer, semi-lightweight plaster for waterproofing and decoration, based on natural lime, white cement, graded sand, mineral pigments and specific additives.

Use

Fassacouche is intended for use as a bulk coloured plaster on:

- masonry compliant with NF DTU 20.1 class Rt2 or Rt3 in accordance with standard NF DTU 26.1, made from lightweight or normal concrete blocks or terracotta bricks;
- concrete walls compliant with NF DTU 23.1 ;
- class Rt2 and Rt3 coatings in accordance with NF DTU 26.1 ;
- older substrates: refer to the CSTB guidelines for one-layer waterproofing plasters, nos. 2669-2 and 3207.

Fassacouche is not recommended for use on gypsum coatings.

Technical data

Specific weight of the powder	approx. 1150 kg/m ³
Minimum thickness	10 mm
Grading	< 1.5 mm
Mixing water	approx. 26 - 27%
Yield*	approx. 13 kg/m ² when applied to a thickness of 10 mm
Density of hardened plaster	approx. 1350 kg/m ³
Compressive strength (EN 1015-11)	2.5 - 5 MPa
Water vapour diffusion resistance factor (EN 1015-19)	$\mu \leq 8$ (measured value)
Capillary water absorption coefficient (EN 1015-18)	W2
Thermal conductivity coefficient (EN 1745)	$\lambda = 0.43$ W/m·K (tabulated value)
Reaction to fire	A1
Conformity to standard EN 998-1	OC-CSII-W2
Classification in accordance with standard NF DTU 26.1	OC2
Storage	Store in a dry place for no longer than 12 months.
Supply	Special sacks of approx. 25 kg.

* Actual yield may vary depending on the type of finish required.

Substrate preparation

The wall must be free of dust, dirt, salt efflorescence, etc.. Any traces of oil, grease, wax, etc. must be removed beforehand. Smooth concrete surfaces must be dry and treated beforehand with primers, such as S 650, or by adding around 0.5 litres of AG 15 to each sack of **Fassacouche**. Joints between different elements must be reinforced using special alkali resistant fibreglass mesh. When using alkali resistant fibreglass mesh, in order to minimise the risk of hairline cracks appearing, the mesh must not be attached directly to the wall, but rather immersed in the surface of the plaster.

Application

Fassacouche must be prepared by hand or using plaster machines such as FASSA, PFT, PUTZKNECHT, TURBOSOL and the like. It is applied in two layers to a thickness of 10 mm, working from the bottom upwards and, then smoothed using an H-shaped or blade screed with horizontal and vertical movements, until a smooth surface is obtained. Application in one layer only is possible when the substrate being plastered is very uniform and well prepared. When preparing by hand, add around 6.5 litres of water for each 25 kg sack, and mix for around 5 minutes. After mixing with water, the plaster must be applied within 30 minutes.

03 COLOURS AND FINISHES

FASSACOUCHE plaster can be given the following finishes after a few hours:

- Scratched
- Floated
- Sponge floated
- Smooth



Scratched



Floated



Sponge floated



Smooth

Colour range



Important! Dark coloured plasters with a solar radiation absorption factor of over 0.7, identified by the symbol * in this document, do not come under the scope of standard DTU 26.1 P1-2.

"Because they absorb more solar radiation, dark coloured plasters are subject to more constraints, particularly thermal variations, and therefore favour nuances in tone and the perception of white efflorescence".

Application methods for these plasters must therefore be adapted to the ambient humidity and temperature conditions at the time of application.

The colours shown here are purely indicative and can vary even significantly depending on site applications conditions. We recommend that you consult our samples.

FASSA UK Ltd
344 Edinburgh Avenue
Slough SL1 4TU
tel. 01753 573078
www.fassabortolo.com - info.fassauk@fassabortolo.com

FASSA S.r.l.
Via Lazzaris, 3 - 31027 Spresiano (TV)
tel. 0422 7222 - fax 0422 887509
www.fassabortolo.com - fassa@fassabortolo.it

PRODUCTION FACILITIES

Spresiano (TV) - tel. +39 0422 521945 - fax +39 0422 725478
Artena (Roma) - tel. +39 06 951912145 - fax +39 06 9516627
Bagnasco (CN) - tel. +39 0174 716618 - fax +39 0422 723041
Bitonto (BA) - tel. +39 080 5853345 - fax +39 0422 723031
Calliano (AT) - tel. +39 0141 915145 - fax +39 0422 723055
Mazzano (BS) - tel. +39 030 2629361 - fax +39 0422 723065
Molazzana (LU) - tel. +39 0583 641687 - fax +39 0422 723045
Moncalvo (AT) - tel. +39 0141 911434 - fax +39 0422 723050
Montichiari (BS) - tel. +39 030 9961953 - fax +39 0422 723061
Popoli (PE) - tel. +39 085 9875027 - fax +39 0422 723014
Ravenna - tel. +39 0544 688445 - fax +39 0422 723020
Sala al Barro (LC) - tel. +39 0341 242245 - fax +39 0422 723070

FASSALUSA Lda - Portugal
São Mamede (Batalha) - tel. +351 244 709 200 - fax +351 244 704 020

COMMERCIAL BRANCHES

Altopascio (LU) - tel. +39 0583 216669 - fax +39 0422 723048
Bolzano - tel. +39 0471 203360 - fax +39 0422 723008
Sassuolo (MO) - tel. +39 0536 810961 - fax +39 0422 723022

FASSA SA - Switzerland
Mezzovico (Lugano) - tel. +41 (0) 91 9359070 - fax +41 (0) 91 9359079
Aclens - tel. +41 (0) 21 6363670 - fax +41 (0) 21 6363672
Dietikon (Zurich) - tel. +41 (0) 43 3178588 - fax +41 (0) 43 3211712

FASSA FRANCE Sarl - France
Lyon - tel. 0800 300338 - fax 0800 300390

FASSA HISPANIA SL - Spain
Madrid - tel. +34 606 734 628

